

No-SALT CONDITIONER™

Prevent and remove hard water scale deposits and bio-film without salt or chemicals



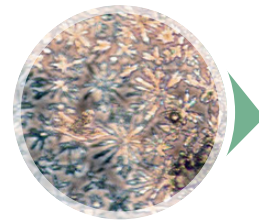
Why Does Scale Form Inside Water-Using Equipment?

- 1 Change in Temperature
- 2 Change in Pressure
- 3 Turbulence

How the No-Salt Conditioner Prevents and Removes Scale:

UNTREATED MINERALS

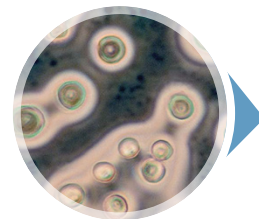
- ▶ As water sees a change in temperature, pressure or turbulence, some of the minerals fall out of solution and are floating or suspended in the water.
- ▶ The untreated minerals look like tree branches and have an electrostatic charge (like static electricity) on their surface, causing them to stick to the inside of water-using equipment and form scale deposits.



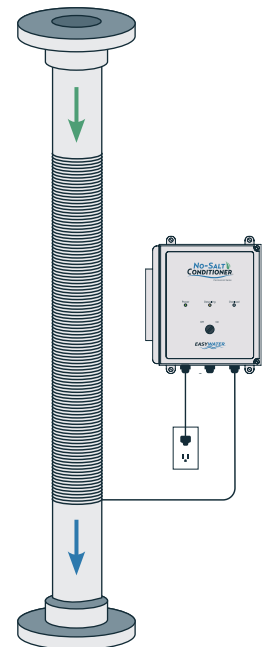
Microscopic view of
UNTREATED
hard water with sticky
tree branch-like shape

TREATED MINERALS

- ▶ No-Salt Conditioner treatment causes the tree branch shaped minerals to cling to each other and form disc-shaped minerals, and as a result, they lose the electrostatic charge and their ability to stick.
- ▶ When the tree branch-shaped minerals cling to each other and form these discs, it creates more capacity or "room" in the water to dissolve mineral and slowly remove existing scale deposits.



Microscopic view of
TREATED
hard water with disc-like
shape



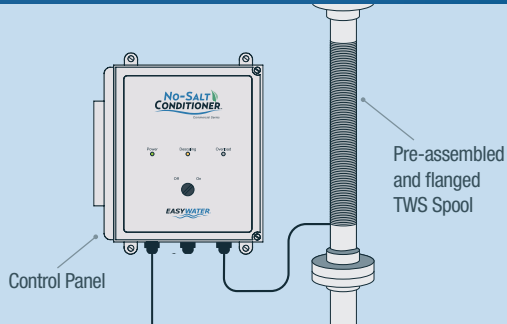
"This test clearly proves the EasyWater No-Salt Conditioner lives up to its claims in a real-world situation."

— Bryan Schoening, Facility Maintenance Director for Core Civic / Nevada Southern Detention Center

Aerator After 6 Months of Treatment



See next page or our website for more photos and details about this test.



INSTALLATION

- ▶ No-Salt Conditioners are installed on all domestic cold water mains and all hot water recirculating loops

FEATURES & BENEFITS

- ▶ Pre-assembled and flanged treatment wraps (TWS Spools) supplied for installation
- ▶ Sturdy, NEMA 4X controller housing
- ▶ Heat-dissipating aluminum fins
- ▶ Ability to service two pipes
- ▶ No service or maintenance costs
- ▶ Estimated life of 10 to 15 or more years
- ▶ Dry Contacts for Remote Monitoring Available

EQUIPMENT PROTECTION EXAMPLES

- ▶ Domestic water heaters / Heat exchangers
- ▶ Mixing valves
- ▶ Piping
- ▶ Pumps
- ▶ Showerheads
- ▶ Aerators
- ▶ Flush valves

TYPICAL APPLICATIONS

- ▶ Domestic hot and cold water
- ▶ Process water
- ▶ Well/lake water used for condensing or cooling
- ▶ Heating water using waste heat

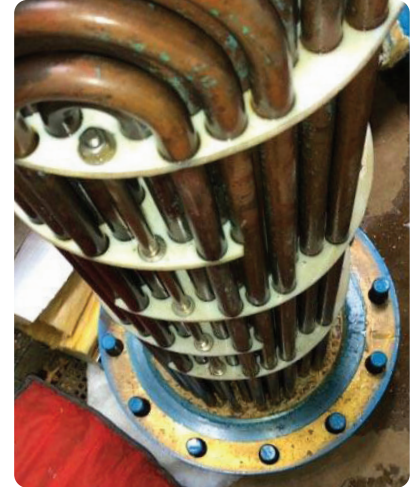
No-Salt Conditioner Case Studies

Iowa State University

6-Month Domestic Water Steam Heat Exchanger Test Results



BEFORE: 6 Months without EasyWater Treatment



AFTER: 6 Months with EasyWater Treatment

Core Civic: Nevada Southern Detention Center

Domestic Water Heater Test Results



BEFORE: 4 Months — Water Heater without EasyWater Treatment



AFTER: 4 Months — Water Heater with EasyWater Treatment